

S.E. 1/4  
SECTION 6, T.5N., R.2W., S.L.B. & M.

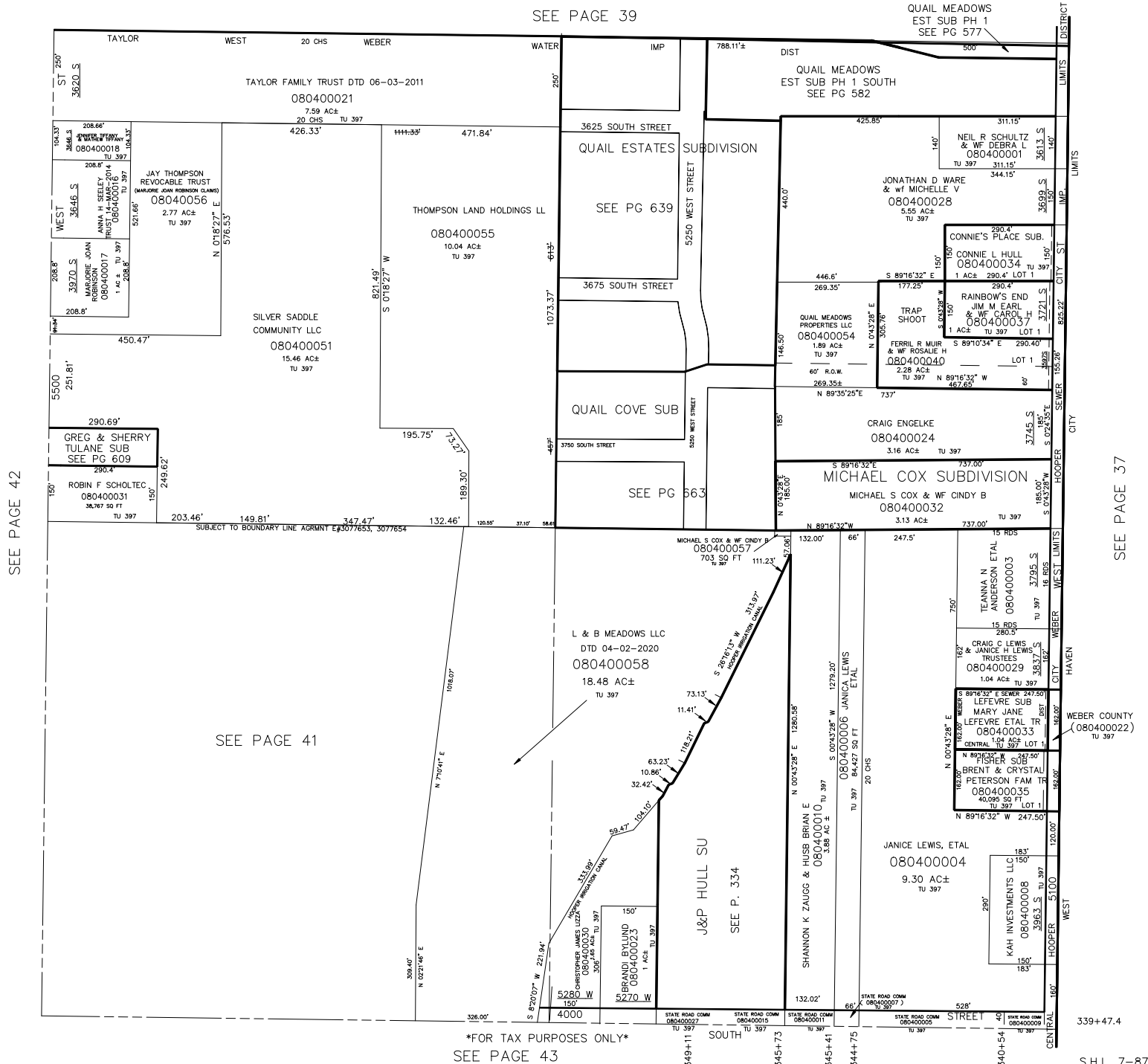
IN HOOPER CITY

SCALE 1"=200'

TAXING UNIT: 397

SEE PAGE 39

QUAIL MEADOWS  
EST SUB PH 1  
SEE PG 577



SEE PAGE 42

SEE PAGE 41

\*FOR TAX PURPOSES ONLY\*  
SEE PAGE 43

SEE PAGE 37

339+47.4

S.H.L. 7-87